



The Fair Trade
Furniture Company

Feelgood furniture
for garden rooms,
conservatories
and more



FAIR TRADE
FURNITURE
GUARANTEED
FAIR TRADE

- Swedish design
- Handmade in Java
- Fair trade guaranteed



"It feels
like it's
hugging
you"

www.fairtradefurniture.co.uk

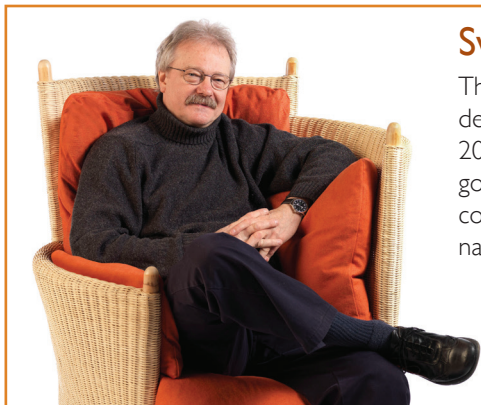
What do we mean by 'feelgood furniture'?



Superb comfort

You may well be surprised when you first sit in our chairs or sofas. We get the most wonderful comments: "it's a hug of a chair!" "ooooh! I could definitely snooze in this" and "that's much more comfy than our living room sofa".

The secret to the superb comfort is great ergonomic design combined with luxurious duck feather cushions. These mould around you, providing the perfect amount of support. That's why we say "*sitting is believing*".



Guaranteed Fair Trade



FAIR TRADE
FURNITURE
GUARANTEED
FAIR TRADE

Making sure our producers get a fair deal is fundamental to us, that's why we have been so bold as to call ourselves the Fair Trade Furniture Company!

Our partners set their own prices, and commit to paying their workers decent wages. We and they have been independently audited by the World Fair Trade Organisation to make sure we comply with their ten guiding principles.

Handmade in Java

Each of our products is handmade by our team of crafts men and women in Java, Indonesia. We work with skilled, well-trained carpenters and each chair takes a staggering 5-7 days to produce.

There is a huge emphasis on selection of the best quality wood and weaving materials to ensure long-lasting quality. Our weavers have adapted their traditional skills to meet the demands of these 21st century designs.



Swedish design

This collection is the brainchild of the late Swedish designer Tord Kjellstrom (S.I.D) who sadly died in early 2023. His brief was to create furniture which did 'feel good' in every sense of the phrase: great looking, really comfortable, produced on a fair-trade basis, and using natural materials that can be sustainably sourced.

Tord's designs achieve that goal by combining bold and unusual styling, with a deep understanding of what makes for a comfortable sitting experience.

Contents



Semarang 3



Jogya 6



Bantul 8



Fabrics 10



Accessories 14



Made to order 15



Semarang Dining 17



Fair Trade Story 18



Curl up, feel-good.

The unique and stylish design of the Semarang chair showcases the creative flair of our Swedish designer Tord Kjellstrom at his most original. The asymmetrical design creates a curl-in corner, with one side high for you to nestle into, the other low, so when you put 2 chairs together you create a special feel-good space – perfect for chatting and unwinding. Works equally well in garden rooms and traditional living spaces...



Best quality materials...

The Semarang design combines strong but stylish wooden frames made using a local Javan wood called Mindi, with beautiful hand-woven seagrass panels, which display the superb craft skills of our Indonesian producers. Each chair takes 5-7 days to produce. Luxurious feather-filled cushions support and cosset you... making this perhaps the ultimate feel-good chair!

Choice of fabrics

We offer a very wide choice of fabrics, plains, semi-plains and patterns, with hundreds of colourways. There are four price bands, identified as A, B, C and D. For full details see our Fabric pages (pp 10-13). Shown here: top left - chairs, VA Momo Tangerine (D), sofa - Linara Clementine (A); top right/front cover - Linara Chartreuse (A); bottom left sofa - VA By The Sea Saffron (D), chair Linara lora (A); bottom right - Linara Chestnut (A).



Semarang

See attached list for prices or visit our website.

Price level based on fabric choice, with 4 price bands: A, B, C and D



Chair high side right
H: 116cm
W: 98cm
D: 85cm



Two-seater sofa
H: 116cm
W: 168cm
D: 89cm



Chair high side left
H: 116cm
W: 98cm
D: 85cm



Three-seater sofa
H: 116cm
W: 213cm
D: 90cm



Companion chair
H: 85cm
W: 87cm
D: 79cm



Companion sofa
H: 85cm
W: 145cm
D: 79cm

Product footprints

Figure out what will work in your space, download our cut-out footprints and scaled paper floor plans. www.fairtradefurniture.co.uk



Fabrics shown here: top - Geneva Moonstone (A) and VA Birdhop Pigeon (D); middle left - Geneva Alabaster (A); middle right - Kaiko Pumpkin (B); bottom - Linara Chartreuse (A)
Top of page 5 - chairs - Kaiko Pumpkin (B) and sofa - Linara Clementine (A).

Semarang Accessories

See attached list for prices or visit our website.

Price level based on fabric choice, with 4 price bands: A, B, C and D



Shelving unit with cabinet, shelves and planter:
H: 150cm
W: 77cm
D: 40cm



Cabinet
H: 63cm
W: 77cm
D: 40cm



Coffee table
H: 50cm
W: 80cm
D: 45cm



2-Part Coffee table combined tables
H: 57cm
W: 94cm
D: 77cm



3 legged Side table
H: 57cm
W: 48cm
D: 36cm



Footstool
H: 49cm
W: 55cm
D: 45cm



Low footstool
H: 26-39cm
W: 37cm
D: 41cm



Side table
H: 70cm
W: 44cm
D: 44cm

Product footprints

Figure out what will work in your space, download our cut-out footprints and scaled paper floor plans. www.fairtradefurniture.co.uk



Fairtrade Furniture - design by Tord Kjellstrom, industrial designer (S.I.D.)



Set prices

The sets shown below have between 5 and 10% discount built-in (see price list).

4 piece set 2 chairs, 1 footstool, 1 side table.



6-piece sofa set A: sofa, 2 chairs, coffee table, side table, footstool



6-piece sofa set B: sofa, 2 chairs, 2-part coffee table, side table, footstool





Quirky, relaxing, cosy. Our most embracing chairs!

The unusual asymmetrical design of the Jogya chair creates a unique sitting experience. The high side provides a cosy corner for you to snuggle into, while the low side is the perfect height for reaching your drink.

Put two chairs together and you create an intimate feel-good space: ideal for chatting and relaxing.

The Jogya range lends itself to sunny garden-facing rooms but also sets off traditional furniture nicely...



Indonesian craftsmanship

The Jogya wickerwork comprises fine peeled rattan, woven onto a structure of rattan poles. The result is strong and resilient furniture which exudes quality, and shows off the sheer craftsmanship of our weavers. Luxurious feather-filled cushions made in Somerset complete the feel-good experience!

Choice of fabrics

We offer a very wide choice of fabrics, plains, semi-plains and patterns, with hundreds of colourways. There are four price bands, A, B, C and D. For full details see our Fabric pages (pp 10-13). Shown here: top left - high chairs Scala Jade (B), sofa and low chair Linara Azure(A); top right - Geneva Shingle; bottom right - VA Plain Dotty Cornflower (sofa)(D), VA Stripe & Dash Cornflower (2 chairs) (D); bottom left - Linara Tomato (A), and top right page 7 Linara Rhubarb (A).

Jogya

See attached list for prices or visit our website.

Price level based on fabric choice, with 4 price bands: A, B, C and D



Chair high side right

H: 110cm
W: 98cm
D: 86cm



Symmetrical chair

H: 110cm
W: 94cm
D: 86cm



Chair high side left

H: 110cm
W: 98cm
D: 86cm



Footstool

H: 47cm
W: 42cm
D: 42cm

High two-seater sofa*



H: 110cm
W: 163cm
D: 86cm

Low two-seater sofa*



H: 110cm
W: 155cm
D: 86cm

*Can be ordered with one side high and one side low (adds ca. 3 months to lead-time).



Side table

H: 65cm
W: 40cm
D: 40cm



Coffee table - glass top

H: 51cm
W: 84cm
D: 50cm

Coffee table - wood top

H: 51cm
W: 82cm
D: 48cm

Product footprints

Figure out what will work in your space, download our cut-out footprints and scaled paper floor plans. www.fairtradefurniture.co.uk



Set prices

The sets shown below have between 5 and 10% discount built-in (see price list).

4 piece set 2 chairs, 1 footstool, 1 side table.



6 piece set High sofa, 2 chairs, coffee table, side table, footstool.



Fairtrade Furniture - design by Tord Kjellstrom, industrial designer (S.I.D.)



Compact and comfortable...perfect for smaller spaces.

This is our range of smaller feel-good chairs, designed with the space-conscious in mind. The chair has a retro feel to it, with an attractive curved back and sleek straight sides, quirky 'horns' and 'legwarmers' adding a touch of personality to the chair!

Ideal for conservatories and garden rooms, but also very good as occasional chairs in living rooms, or in any cosy corner. Also light enough to be taken outside in good weather to enjoy the garden.



Low or high-backed options:

Both the chairs and the sofas come in two versions: either a low back, for comfortable seating which allows you to maximize your views, or our high-backed version (about 15cm taller) which gives more support for back and shoulders.

Materials used...

The main material for this range is natural banana fibre. The beautiful wickerwork is woven onto a structure of rattan poles. The wooden components are made using FSC-certified acacia and teak. The result is a neat chair which exudes quality, and shows off the sheer craftsmanship of our weavers. Luxurious feather-filled cushions (from Somerset) complete the feel-good effect.

Choice of fabrics

We offer a very wide choice of fabrics, plains, semi-plains and patterns, with hundreds of colourways. There are four price bands, identified as A, B, C and D. For full details see our Fabric pages (pp 10-13). Shown here: top left, bottom right, and below right - Acacia Oyster (B); top right, middle right, bottom left - Linara Coffee Bean (A).

Bantul

See attached list for prices or visit our website.

Price level based on fabric choice, with 4 price bands: A, B, C and D



Low back chair
H: 81cm
W: 66cm
D: 82cm



Low back sofa
H: 81cm
W: 124cm
D: 82cm



High back chair
H: 95cm
W: 72cm
D: 82cm



High back sofa
H: 95cm
W: 130cm
D: 82cm



Table
H: 51cm
W: 37cm
D: 37cm



Coffee table
H: 51cm
W: 70cm
D: 50cm



Footstool
H: 46cm
W: 42cm
D: 42cm

Product footprints

Figure out what will work in your space, download our cut-out footprints and scaled paper floor plans. www.fairtradefurniture.co.uk



Set prices

The sets shown below have between 5 and 10% discount built-in (see price list).

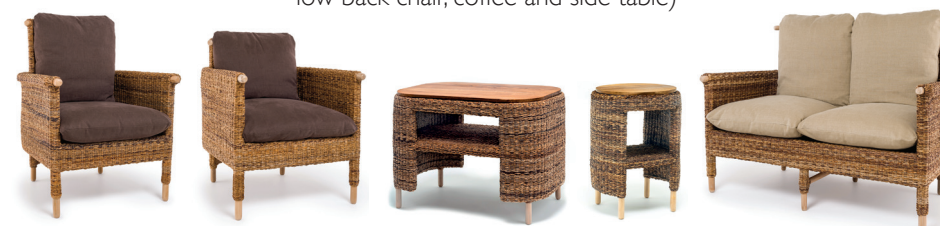
Two low back chair set
2 low back chairs, plus side table.



Two high back chair set
2 high back chairs, plus side table.



5 piece sofa set (high back sofa, high back chair, low back chair, coffee and side table)



Fairtrade Furniture - design by Tord Kjellstrom, industrial designer (S.I.D.)

A wealth of possibilities waiting for you to explore...

We have developed a selection of fabrics which we think suits the character of our ranges, and allows you to tailor the furniture to your preferred style and colour-scheme.

We have included a selection of 80 possibilities on the next 4 pages, arranged by colour family. By each colour swatch you will see the price band indicated (A, B, C, D).

The following fabrics are available:

Band A:

- Geneva - cotton/linen (Romo)
- Linara - brushed soft-touch cotton/linen (Romo)

Band B:

- Delta - printed cotton with stain protection (Linwood)
- Sefina, Mikado, Kaiko, Chella, Scala, Acacia - washable prints (Romo)
- Omega - washable velvets with stain protection (Linwood)

Band C:

- Small prints: High Wire, Hopscotch, Helter Skelter - washable linen (Linwood)
- Lars plain and geometric - heavy-duty upholstery fabrics (Linwood)
- Saddle - recycled leather

Band D:

- Vanessa Arbuthnott linen and cotton/linen prints (dry clean only)

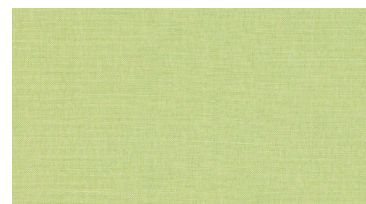


Fabric featured
- Linara
Chartreuse

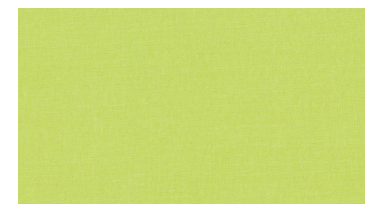
Fabric options - greens and turquoise



Linara - Zest (A)



Linara - Gooseberry (A)



Linara - Chartreuse (A)*



Linara - Basil (A)



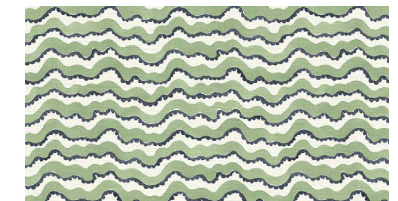
Lars Geometric - Pear (C)*



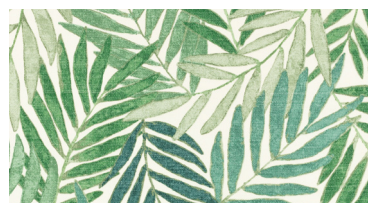
Wild Fern- Moss (D)



Helter Skelter - Borneo (C)



Waltzer - Passo Doble (C)



Samora - Canopy (B)



Linara - Cypress (A)*



Delta Lime (B)*



Omega - Pistachio (B)*



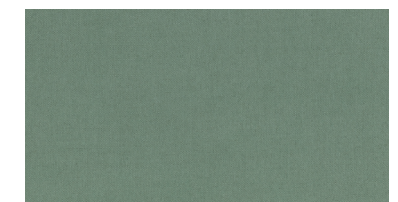
Geneva - Willow (A)*



Smocked - Cactus (C)



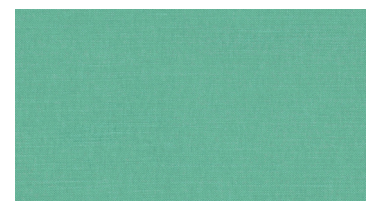
Linara - Oregano (A)



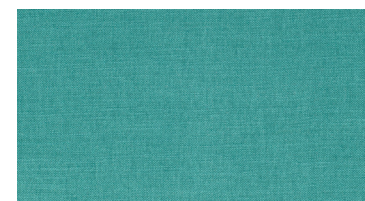
Geneva - Ivy (A)



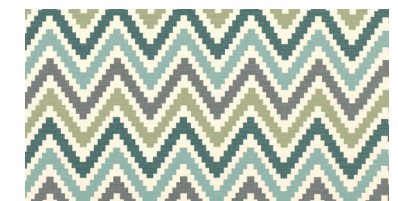
Linara - Azure (A)*



Linara Verdigris (A)



Linara - Hummingbird (A)



Scala - Jade (B)*

*Visit our website to see what the fabrics shown with an asterisk look like on our furniture: www.fairtradefurniture.co.uk

Call us on: 01722 340881 10

Fabric options - blues

We have included a selection of 80 possibilities, arranged by colour family. By each colour swatch you will see the price band indicated (A, B, C, D). The following fabrics are available:

Band A:

- Geneva - cotton/linen (Romo)
- Linara - brushed soft-touch cotton/linen (Romo)

Band B:

- Delta - printed cotton with stain protection (Linwood)
- Sefina, Mikado, Kaiko, Chella, Scala, Acacia - washable prints (Romo)
- Omega - washable velvets with stain protection (Linwood)

Band C:

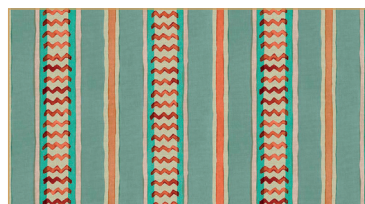
- Small prints: High Wire, Hopscotch, Helter Skelter - washable linen (Linwood)
- Lars plain and geometric - heavy-duty upholstery fabrics (Linwood)
- Saddle - recycled leather

Band D:

- Vanessa Arbuthnott linen and cotton/linen prints (dry clean only)



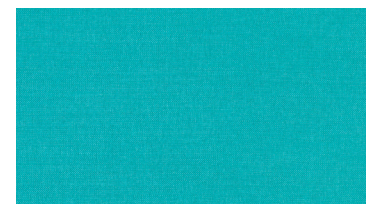
Fabric featured - Geneva Neptune



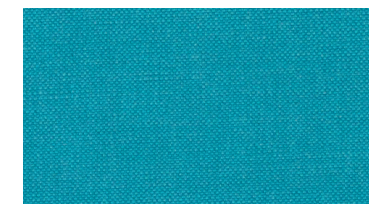
High Wire - Jockey (C)*



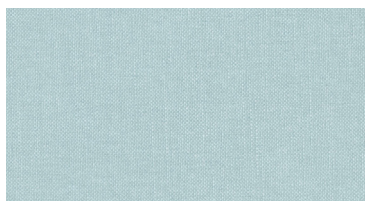
Sunflower - Light Indigo (D)



Linara - Teal (A)



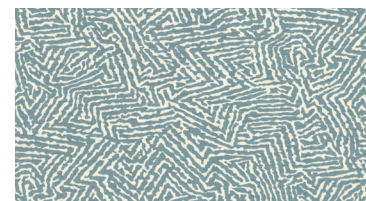
Linara - Lake (A)*



Linara - Tourmaline (A)



Lars Plain - Venetian Blue (C)



Kaiko - Steel Blue (B)



Geneva - Nordic (A)*



Sefina - Duck Egg (B)*



Smocked - Squid Ink (C)



By The Sea - Teal, Charcoal (D)*



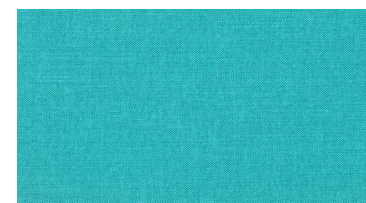
Mikado - Rockpool (B)*



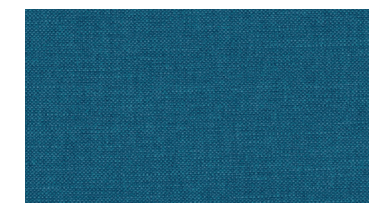
Linara - Buxton Blue (A)



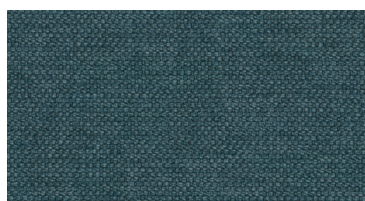
Helter Skelter - Slate (C)



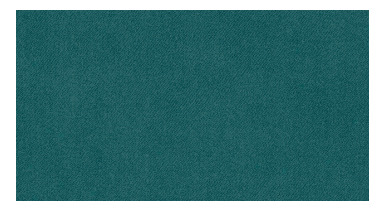
Linara - Peacock (A)



Linara - Indigo (A)



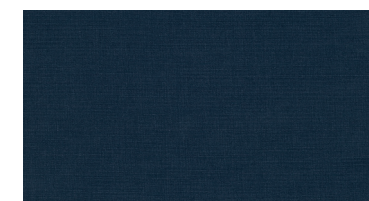
Delta - Ocean (B)*



Omega - Airforce Blue (B)*



Omega - Pacific (B)



Geneva - Neptune (A)*

*Visit our website to see what the fabrics shown with an asterisk look like on our furniture: www.fairtradefurniture.co.uk

Call us on: 01722 340881 11

Fabric options - warm colours

We have included a selection of 80 possibilities, arranged by colour family. By each colour swatch you will see the price band indicated (A, B, C, D). The following fabrics are available:

Band A:

- Geneva - cotton/linen (Romo)
- Linara - brushed soft-touch cotton/linen (Romo)

Band B:

- Delta - printed cotton with stain protection (Linwood)
- Sefina, Mikado, Kaiko, Chella, Scala, Acacia - washable prints (Romo)
- Omega - washable velvets with stain protection (Linwood)

Band C:

- Small prints: High Wire, Hopscotch, Helter Skelter - washable linen (Linwood)
- Lars plain and geometric - heavy-duty upholstery fabrics (Linwood)
- Saddle - recycled leather

Band D:

- Vanessa Arbuthnott linen and cotton/linen prints (dry clean only)



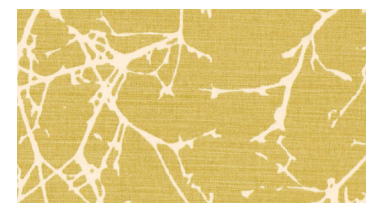
Fabric featured - Omega Carnelian with Omega Pistachio lumbar



Mikado - Dandelion (B)



Wild and Free - Saffron, Dormouse (D)



Acacia - Quince (B)



Sunflower - Ochre (D)



Linara - lora (A)*



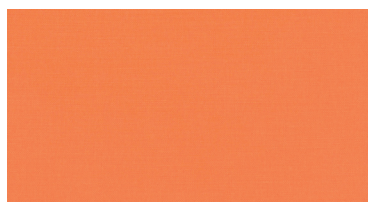
Omega - Mustard (B)*



Linara - Henna (A)



Kaiko - Pumpkin (B)*



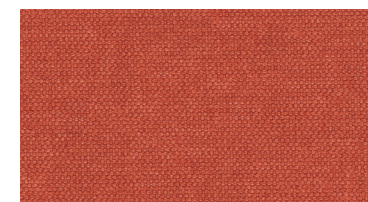
Linara - Clementine (A)*



Helter Skelter - Etna (C)*



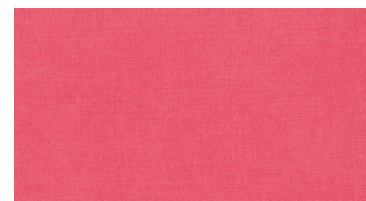
Omega - Burnt Orange (B)



Delta - Tangerine (B)



Maze - Red Apple (C)



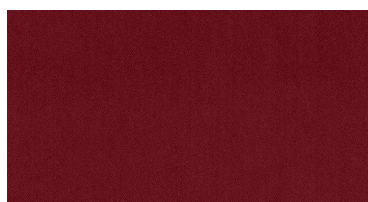
Linara - Raspberry (A)*



Linara - Cranberry (A)



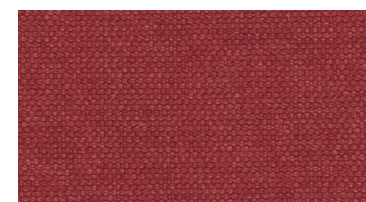
In Full Flight - Damson (D)



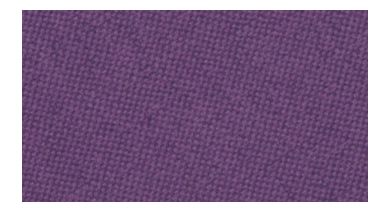
Omega - Vermillion (B)



Omega - Carnelian (B)*



Delta - Poppy (B)*



Linara - Tyrian Purple (A)

Fabric options - neutral colours

We have included a selection of 80 possibilities, arranged by colour family. By each colour swatch you will see the price band indicated (A, B, C, D). The following fabrics are available:

Band A:

- Geneva - cotton/linen (Romo)
- Linara - brushed soft-touch cotton/linen (Romo)

Band B:

- Delta - printed cotton with stain protection (Linwood)
- Sefina, Mikado, Kaiko, Chella, Scala, Acacia - washable prints (Romo)
- Omega - washable velvets with stain protection (Linwood)

Band C:

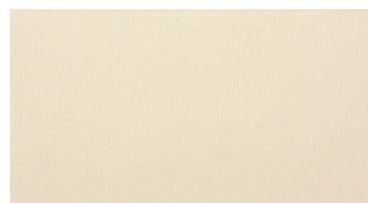
- Small prints: High Wire, Hopscotch, Helter Skelter - washable linen (Linwood)
- Lars plain and geometric - heavy-duty upholstery fabrics (Linwood)
- Saddle - recycled leather

Band D:

- Vanessa Arbuthnott linen and cotton/linen prints (dry clean only)



Fabric featured -
Linara Teak



Geneva - Alabaster (A)*



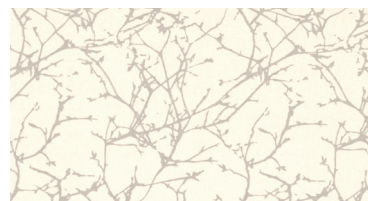
Linara - Vanilla (A)*



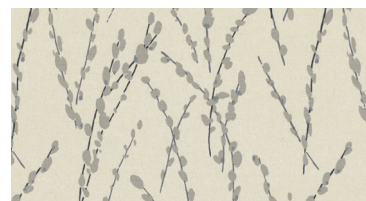
Geneva - Shingle (A)*



Linara - Teak (A)



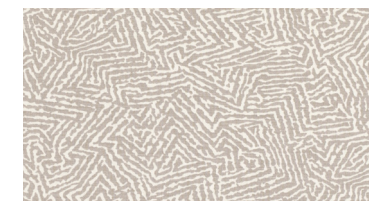
Acacia - Oyster (B)*



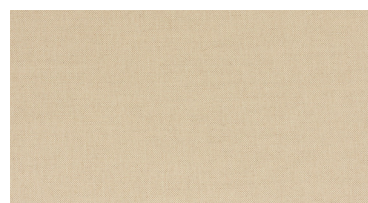
Mikado - Natural (B)*



Sefina - Mushroom (B)



Kaiko - Stone (B)



Geneva - Barley (A)



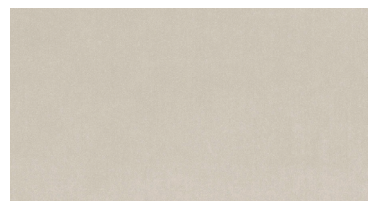
Lars Plain - Linen (C)*



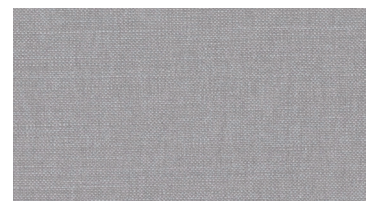
Delta - Grain (B)



Omega - Hemp (B)*



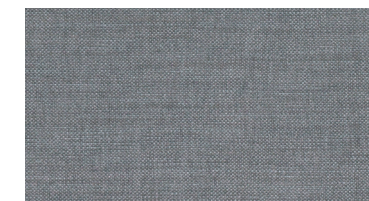
Omega - Chalk (B)



Linara - Andesite (A)



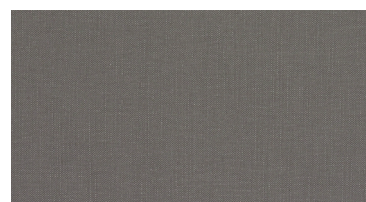
Scrunched - Grand Canyon (C)



Linara - Magnet (A)*



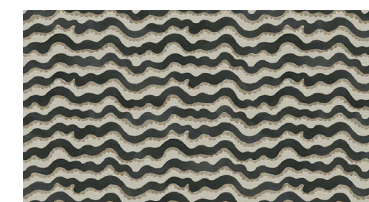
Omega - Battleship (B)



Geneva - Pewter (A)



Saddle - Mustang (C)*



Waltzer - Rumba (C)

*Visit our website to see what the fabrics shown with an asterisk look like on our furniture: www.fairtradefurniture.co.uk

Call us on: 01722 340881 13



Planters

We have created three woven planters which are designed to complement our chairs, tables and footstools; or they can of course work on their own as a way of enhancing your plants and floral displays. Metal liners are provided inside each planter:

E. Seagrass tall planter. Ideal for palms and other dramatic plants where more height is desired; this design is made in seagrass, and features two wooden shelves. H: 101cm x W: 41cm (at base)

F. Triple planter. Providing display opportunities at three different heights. This design is made in dark banana fibre. H: 75cm x W: 50cm.

G. Rattan single planter. With a handy wooden shelf, made in rattan. Very good for medium-sized pots and plant displays at waist height. H: 60cm x W: 41cm.

H. In addition, in the Semarang range there is a cabinet which features shelving and a planter section at the top (shown below, liner not supplied). H: 150cm x W: 77cm x D: 40cm.



Lighting

Our furniture collection includes 4 classic lighting products. These have been designed to complement our chairs tables and footstools, and will add a touch of atmosphere and style to the room of your choice.

The design features a tall pyramid shape, woven on a frame of rattan poles, and using fine banana fibre for the weaving. Choose from a floor lamp or two sizes of table lamp. The lamps are available in pale or dark banana fibre.

There is a choice of two lamp shades, one made from recycled card, the other from a cream fabric with leaves captured underneath.

For prices see attached list. Dimensions are:

A. Floor lamp with shade H: 163cm W: 29cm

B. Large table lamp with shade H: 77cm W: 22cm

C. Small table lamp with shade H: 57cm W: 18cm

D. Semarang Pyramid light H: 159cm W: 35cm



Fairtrade Furniture - design by Tord Kjellstrom, industrial designer (S.I.D.)

MADE TO ORDER COLLECTION

Our design and production teams have created three other ranges which are now available on a 'made-to-order' basis. That means we commission these items specifically for you, and in whatever combination works for you. The lead-time is typically 4-6 months but this

can vary depending on time of year, sometimes a little quicker, sometimes a little longer. Either way you have the pleasure of knowing that what you are buying is being made specially for you, and we can let you know exactly who has been involved in its production.



Kartosuro



Beautiful curved lines, with a traditional armchair feel.

The inspiration for the Kartosuro range was a cylindrical drum, which you see best when you look at this chair from the back and sides. The straight vertical lines of the chair structure contrast with its nearly circular cross-section when seen from above: so from behind you see a beautiful woven sculpture, from in front a comfortable well-balanced armchair!

As well as the beautiful chair and sofa the range includes a practical side-table at the perfect height for drinks, a coffee table available with either wooden or glass top, and a multi-purpose footstool (can be sat on, and used for trays, as well as being a home for your feet or pets).

The range can be produced in pale banana fibre (as shown) but also in dark banana, and seagrass.

For prices, dimensions and to discuss your requirements please contact the office on 01722 340881



MADE TO ORDER COLLECTION



Jepara



Contemporary, modular design... luxurious and flexible seating, space efficient.

The Jepara range provides our most flexible seating solution yet. The clever modular design allows you to create more or less whatever shape you want; whilst the low backs mean you can make the most of any views. This range is an excellent choice for Victorian conservatories, octagonal summerhouses, modern garden-rooms and many other spaces.

The corner chair works well up against a wall, or fits neatly into corners. When pushed together two corner chairs make an impromptu cosy two-seater sofa.

The corner sofa unit provides an excellent basis for L-shaped seating around two walls, without the seating in the corner becoming too long or awkward.

Our hexagonal chair has been cunningly designed to fit snugly into windows or spaces where the walls meet at 135°; while our middle chair provides the final piece of flexibility to the kit; it can be added between two corner chairs, or to either side of a corner sofa unit, etc. The range also includes a footstool,

side-table and an octagonal coffee-table which can be made with a pouffe cushion.

The range can be produced either in dark banana fibre (as shown right) or in lighter banana (shown above) for a more Scandinavian look.

For prices, dimensions and to discuss your requirements please contact the office on 01722 340881



MADE TO ORDER COLLECTION



Semarang Dining

Quirky design, craftsmanship and comfort - feelgood furniture at its finest.

Customers have been asking us for some time to develop a dining table and chairs. It made sense to us because lots of people use their conservatories and garden-rooms for eating and entertaining. So we briefed our Swedish designer Tord Kjellstrom to come up with a design which would complement our Semarang range, use the same raw materials, mindi wood and seagrass, and bring something unique to the world of dining.

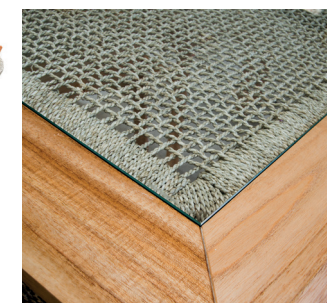


Twist and turn...

Tord came up with the idea of a chair which would be more sociable. In particular he was thinking about those classic moments between courses, and at the end of the meal, when you want to relax. That gave rise to the idea of a one-sided chair that would allow you to twist and turn to chat with your neighbour in a properly relaxed way.

Consequently there are four chair types available as shown here (left): a left and a right chair (like our Semarang feelgood chairs), a middle chair with no side, and a carver chair with two sides. When you put the chairs together you end up with a lovely flowing line. The tables themselves combine a wooden frame, with a toughened glass top which sits above a woven panel of seagrass – so that there is a pleasing semi-transparent effect.

For prices, dimensions and to discuss your requirements please contact the office on 01722 340881



Our Fair Trade Story

Our guiding principles



The Fair Trade Furniture Company was set up in 2007 by Hugh Ross and his late wife Rachel. It is a family concern with simple aspirations:

- Create special products which people will cherish
- Make Fair Trade a way of life
 - Minimise our environmental footprint
- Be honest and open in all our communications.



What we mean by Fair Trade

We are members of the World Fair Trade Organisation and follow their 10 guiding principles:

- 1 Use trade to reduce poverty, creating opportunities for economically disadvantaged producers
- 2 Operate with transparency and accountability
- 3 Trading practices which emphasise the well-being of producers
- 4 Payment of a fair price, set by the producer
- 5 No child or forced labour
- 6 Encourage equal opportunity, non-discrimination and freedom of association
- 7 Ensure safe and healthy working conditions
- 8 Focus on building the capacity of suppliers
- 9 Active promotion of Fair Trade
- 10 Commitment to the environment, and sustainable practices.

We were independently audited for the second time in Spring 2023 - both in the UK and in Indonesia - to check that our practices comply with the WFTO guidelines. As a result we now have 'Guaranteed Fair Trade' status for 4 years.

Environmental impact

We have deliberately chosen weaving materials which are all fast-growing, renewable natural resources, which grow abundantly in Indonesia: rattan, seagrass and banana fibre.

Of these, the material we use most is seagrass; this comes from Kulonprago district near the famous temple of Borobudur. The seagrass is produced by hundreds of local farmers as an extra source of income.

The main wood we use is called 'mindí'. This is an Indonesian hardwood, which grows fast (to a tree diameter of about 50cm in 10-12 years) and is found locally on Java on the hillsides of the Merapi volcano and in other areas within 3-4 hours of our partners.

During our last visit to Java, we met with one of the timber farmers to see where the mindí wood comes from and to assess their sustainability practices. We were delighted to learn how automatically they replant and nurture saplings to ensure they have an ongoing source of wood and family income.

INORI have achieved SVLK certification, which means the mindí wood they buy is fully tracked from source through to the final product, and is regularly audited. We are now working with INORI to move the mindí growers and timber suppliers towards FSC certification.

Where we use other wood (e.g. on Jogya/Bantul ranges), INORI now use FSC-certified teak, acacia and mahogany.

Over time, INORI's goal is to create their own mindí plantation in Java run on community-based principles.



Banana trees



Mindí trees marking the hedge line



Mindí logs cut and drying

Our Fair Trade Story



Meet the makers

Inori (Indonesia Origin) are based in Jogjakarta. They are a Fair Trade agency established in June 2004 with the aim of facilitating micro and small producers to access markets through their trading activities. The business is run by Deddy Heriyanto (below right). Up until 2020 they managed and co-ordinated the producer groups involved in the production of our Jogja, Kartosuro and Bantul ranges; from 2016 they had also been responsible for our Dining range and some of the flagship Semarang production.

During 2020 we asked them to take over full responsibility for all our production, and they therefore set up their own operation, sharing premises and some team members with Mandiri Craft. This is a specialist charity which employs physically disabled people and helps them develop practical carpentry skills. INORI now employ their own carpenters, packing and admin team, and a production/quality manager, and they provide work for some of the Mandiri carpenters.

For all our weaving requirements, Deddy continues to work closely with the Kisno workshop in Trangsan (Kartosuro region), where this small family business continues the long-standing weaving tradition of the area. Mr and Mrs Kisno employ about 6 full-time weavers, and our orders represent about half their turnover.

The lampshades and electrical components in our lighting range are made by a small company called Borneo Lighting, who specialise in handmade lampshades using recycled materials and other craft-based materials.

Who benefits from the Fair Trade?

Put simply we think everyone benefits: our suppliers, their workforce and you the consumer.

Our supplier partners benefit from:

- Regular advance payments to ease their cashflow
- Prices fixed by them so they can afford to pay decent wages and make a profit
- Training and support when they need it for skills development and better working conditions

The teams who work for our partners benefit from:

- Wage levels above the local average and moving towards the concept of a living wage
- Good working conditions and employment benefits

And as consumers, we benefit from a direct connection with the people who made our furniture and the knowledge that they have been well paid for their skill and labour.

As our partner Deddy puts it:

“We feel like we have a brother overseas. We have partners who give respect to us even though we are a small business. We feel our works are appreciated in a proper way. Thank you very much.”



Delivery information

Leadtimes

Our normal lead-time is 6-8 weeks from an order being placed to delivery to your home. This allows us to order the fabric, and make up the cushions of your choice. However if we are waiting for stock from Indonesia, the lead-time can be longer.

Delivery

Our standard delivery charges for mainland England & Wales are:

Small tables, stools, planters, table lights £15
Coffee tables & cabinets £20
Shelving planter unit and floor/pyramid lights £30
Chair £50
Sofa £75
4-piece sets £75
Sofa sets £100

For supplements to Scotland, Northern Ireland and islands please contact us for a quote.

Deliveries outside the UK

We also deliver to Ireland, continental Europe and further afield. Recent shipments have been made to Switzerland, Holland, Germany, France, Spain, the USA and New Zealand!

A MEMBER OF
A©ID
ANTI COPYING IN DESIGN



Semarang range, modelled by Hugh and Phoebe.



**The Fair Trade
Furniture Company**

Find out more at www.fairtradefurniture.co.uk

Or contact us

T: 01722 340881

M: 07801 380793

E: hello@fairtradefurniture.co.uk