

Feelgood furniture for garden rooms, conservatories and more



- Swedish design
- Handmade in Java
- Fair trade guaranteed



**The Fair Trade
Furniture Company**

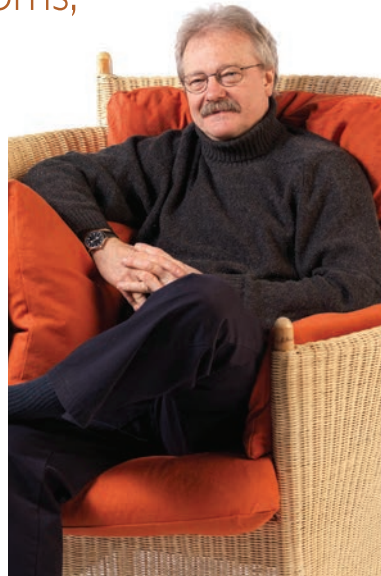
www.fairtradefurniture.co.uk

Feelgood furniture for garden rooms, conservatories and more

Fair deal

Making sure our producers get a fair deal is fundamental to us, that's why we have been so bold as to call ourselves the Fair Trade Furniture Company!

Our partners set their own prices, and commit to paying their workers decent wages. We and they have been independently audited by the World Fair Trade Organisation to make sure we comply with their ten guiding principles.



Swedish design

This collection is the brainchild of our Swedish designer Tord Kjellstrom (S.I.D.) above.

His brief was to create furniture which did 'feel good' in every sense of the phrase: great looking, really comfortable, produced on a fair-trade basis, and using natural materials that can be sustainably sourced.

Tord's designs achieve that goal by combining bold and unusual styling, with a deep understanding of what makes for a comfortable sitting experience.

Contents



Semarang 3



Semarang Dining 6



Jogya 8



Kartosuro 10



Bantul 12



Lighting 14



Fabric Options 15



Fair Trade Story 19





Semarang

Curl up, feel-good.

The unique and stylish design of the Semarang chair showcases the creative flair of our Swedish designer Tord Kjellstrom at his most original. The asymmetrical design creates a curl-in corner; with one side high for you to nestle into, the other low, so when you put 2 chairs together you create a special feel-good space – perfect for chatting and unwinding. Works equally well in garden rooms and traditional living spaces...



Best quality materials...

The Semarang design combines strong but stylish wooden frames made using a local Javan wood called Mindi, with beautiful hand-woven seagrass panels, which display the superb craft skills of our Indonesian producers. Each chair takes 5-7 days to produce. Luxurious feather-filled cushions support and cosset you... making this perhaps the ultimate feel-good chair!

Choice of fabrics

We offer a wide choice of fabrics, plains, semi-plains and patterns, with hundreds of colourways. There are three price levels; Standard (S), Supplement A, and Supplement B. For full details see our 'Fabric Options' pages. Shown here: top left - VA Momo Tangerine (B); top middle - Geneva Pumpkin (S); top right - Origami Sweet Pea and Tangerine (B); bottom left sofa - VA By The Sea Saffron (B), chair Linara lora (A); bottom right and front cover - Geneva Wasabi (S).



Semarang

Price level based on fabric choice: S - Standard fabric A - Supplement A fabric B - Supplement B fabric



**Chair
high side right**

H: 116cm
W: 98cm
D: 85cm

£1,150 (S)
£1,275 (A)
£1,400 (B)



**Two-seater
sofa**

H: 117cm
W: 168cm
D: 80cm

£1,900 (S)
£2,100 (A)
£2,300 (B)



**Chair
high side left**

H: 116cm
W: 98cm
D: 85cm

£1,150 (S)
£1,275 (A)
£1,400 (B)



**Three-seater
sofa**

H: 117cm
W: 216cm
D: 90cm

£2,500 (S)
£2,800 (A)
£3,100 (B)



**Companion
chair**

H: 85cm
W: 87cm
D: 76cm

£ 950 (S)
£1,050 (A)
£1,150 (B)



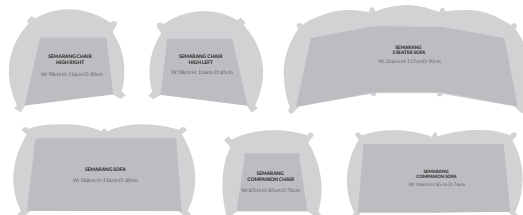
**Companion
sofa**

H: 85cm
W: 146cm
D: 76cm

£1,500 (S)
£1,650 (A)
£1,800 (B)

Product footprints

Figure out what will work in your space, download our cut-out footprints and scaled paper floor plans. www.fairtradefurniture.co.uk



Fabrics shown here: top - VA Birdhop Pigeon (B); middle left - Geneva Alabaster (S); middle right - Kaiko Pumpkin (A); bottom - Geneva Wasabi (S)
Top of p.5 Chella Quince (A)

Semarang Accesories

Price level based on fabric choice: S - Standard fabric A - Supplement A fabric B - Supplement B fabric



Shelving unit with cabinet, shelves and planter:
H: 150cm
W: 77cm
D: 40cm
£495



Cabinet
H: 63cm
W: 77cm
D: 40cm
£350



Side table
H: 70cm
W: 44cm
D: 44cm
£180



2-Part Coffee table
Combined tables
H: 57cm
W: 94cm
D: 86cm
£495



Coffee table
H: 50cm
W: 80cm
D: 45cm
£280



Side table
H: 70cm
W: 44cm
D: 44cm
£225



Low Footstool
H: 26-39cm
W: 36cm
D: 41cm
£225 (S)
£240 (A)
£250 (B)



Footstool
H: 53cm
W: 55cm
D: 44cm
£250 (S)
£275 (A)
£300 (B)

Product footprints

Figure out what will work in your space, download our cut-out footprints and scaled paper floor plans. www.fairtradefurniture.co.uk



Set prices

The sets shown below have between 5 and 10% discount built-in. If you want a different combination (of more than 3 pieces) just let us know and we'll create a set price for you.

4 piece set 2 chairs, 1 footstool, 1 side table. £ 2,600 (S)
£ 2,850 (A)
£ 3,100 (B)



5 piece set Sofa, 2 chairs, coffee table, side table, footstool.

£4,200 (S)
£4,600 (A)
£5,000 (B)



Fairtrade Furniture - design by Tord Kjellstrom, industrial designer (S.I.D.)



NEW!
Dining
range

Semarang Dining

Quirky design, craftsmanship and comfort - feelgood furniture at its finest.

Customers have been asking us for some time to develop a dining table and chairs. It made sense to us because lots of people use their conservatories and garden-rooms for eating and entertaining. So we briefed our Swedish designer Tord Kjellstrom to come up with a design which would complement our Semarang range, use the same raw materials, mindi wood and seagrass, and bring something unique to the world of dining.



Twist and turn...

Tord came up with the idea of a chair which would be more sociable. In particular he was thinking about those classic moments between courses, and at the end of the meal, when you want to relax. That gave rise to the idea of a one-sided chair that would allow you to twist and turn to chat with your neighbour in a properly relaxed way.

Consequently there are four chair types available as shown here (left): a left and a right chair (like our Semarang feelgood chairs), a middle chair with no side, and a carver chair with two sides. When you put the chairs together you end up with a lovely flowing line. The tables themselves combine a wooden frame, with a toughened glass top which sits above a woven panel of seagrass – so that there is a pleasing semi-transparent effect.



Semarang Dining

Price level based on fabric choice: S - Standard fabric A - Supplement A fabric B - Supplement B fabric



8-seater table
W: 90cm
D: 220cm
H: 76cm
£1,795



6-seater table
W: 90cm
D: 170cm
H: 76cm
£1,250



Left-sided chair
W: 52cm
D: 59cm
H: 100cm
£400 (S)
£415 (A)
£430 (B)



Right-sided chair
W: 52cm
D: 59cm
H: 100cm
£400 (S)
£415 (A)
£430 (B)



Carver chair
W: 60cm
D: 59cm
H: 100cm
£450 (S)
£465 (A)
£480 (B)



Middle chair
W: 48cm
D: 59cm
H: 95cm
£350 (S)
£365 (A)
£380 (B)

Product footprints

Figure out what will work in your space, download our cut-out footprints and scaled paper floor plans.

www.fairtradefurniture.co.uk



6-seater set
1.7m table, 2 middle chairs,
2 left and 2 right chairs
£3,350 (S)
£3,420 (A)
£3,500 (B)



6-seater set
1.7m table, 2 carver chairs,
2 left and 2 right chairs
£3,525 (S)
£3,600 (A)
£3,675 (B)



8-seater set
2.2m table and 8 chair set
(2 middle chairs, 2 left and
2 right chairs, 2 carver chairs)
£4,700 (S)
£4,800 (A)
£4,900 (B)



Leadtime

Please contact the office to get the latest picture on lead-time for this range (call 01722 340881, or email hello@fairtradefurniture.co.uk)

Fairtrade Furniture - design by Tord Kjellstrom, industrial designer (S.I.D.)



Jogya

Quirky, relaxing, cosy. Our most embracing chairs!

The unusual asymmetrical design of the Jogya chair creates a unique sitting experience. The high side provides a cosy corner for you to snuggle into, while the low side is the perfect height for reaching your drink.

Put two chairs together and you create an intimate feelgood space: ideal for chatting and relaxing.

The Jogya range lends itself to sunny garden-facing rooms but also sets off traditional furniture nicely...



Indonesian craftsmanship

The Jogya wickerwork comprises fine peeled rattan, woven onto a structure of rattan poles. The result is strong and resilient furniture which exudes quality, and shows off the sheer craftsmanship of our weavers. Luxurious feather-filled cushions made in Somerset complete the feelgood experience!

Choice of fabrics

We offer a wide choice of fabrics, plains, semi-plains and patterns, with hundreds of colourways. There are three price levels; Standard (S), Supplement A, and Supplement B. For full details see our 'Fabric Options' page. Shown here: top left - Sofa VA Plain Dotty Cornflower, Chairs VA Stripe & Dash Cornflower (B); top right - Taaru Festival (S); middle left - Geneva Crimson (S); middle right VA Sea Shells (B); bottom - Naina Beach (S). Below right Naina Coral (S)



Jogya

Price level based on fabric choice: S - Standard fabric A - Supplement A fabric B - Supplement B fabric



Chair high side right

H: 111cm
W: 94cm
D: 85cm
£850 (S)
£975 (A)
£1,100 (B)



Symmetrical chair

H: 111cm
W: 93cm
D: 85cm
£775 (S)
£875 (A)
£975 (B)



Chair high side left

H: 111cm
W: 94cm
D: 85cm
£850 (S)
£975 (A)
£1,100 (B)



Footstool

H: 50cm
W: 45cm
D: 45cm
£210 (S)
£240 (A)
£270 (B)



Two-seater sofa*

H: 111cm
W: 162cm
D: 85cm
£1,500 (S)
£1,700 (A)
£1,900 (B)



*Can be ordered with one side high and one side low (adds ca. 3 months to lead-time).



Side table

H: 66cm
W: 40cm
D: 40cm
£200



Coffee table - glass top

H: 52cm
W: 91cm
D: 51cm
£395

Coffee table - wood top

H: 52cm
W: 87cm
D: 47cm
£295



Set prices

The sets shown below have between 5 and 10% discount built-in. If you want a different combination (of more than 3 pieces) just let us know and we'll create a set price for you.

4 piece set 2 chairs, 1 footstool, 1 side table. £ 1,975 (S)
£ 2,225 (A)
£ 2,475 (B)



7 piece set Sofa, 2 chairs, coffee table, side table, footstool. £4,200 (S)
£4,700 (A)
£5,225 (B)



Product footprints

Figure out what will work in your space, download our cut-out footprints and scaled paper floor plans. www.fairtradefurniture.co.uk



Fairtrade Furniture - design by Tord Kjellstrom, industrial designer (S.I.D.)



Kartosuro

Beautiful curved lines, with a traditional armchair feel.



The range includes a practical side-table at the perfect height for drinks, a coffee table available with either wooden or glass top, and a multi-purpose footstool (can be sat on, and used for trays, as well as being a home for your feet or pets).

The inspiration for this range was a cylindrical drum, which you see best when you look at this chair from the back and sides. The straight vertical lines of the chair structure contrast with its nearly circular cross-section when seen from above: so from behind you see a beautiful woven sculpture, from in front a comfortable well-balanced armchair!

The range includes a

Materials used

This simple but graceful design is made from pale banana fibre woven onto a rattan pole frame. The wooden components are made using FSC-certified acacia and teak. Sumptuous feather-filled cushions complete the chair and sofa, creating truly comfortable feelgood chairs.

Choice of fabrics

We offer a wide choice of fabrics, plains, semi-plains and patterns, with hundreds of colourways. There are three price levels; Standard (S), Supplement A, and Supplement B. Shown here: top left Taaru Andaman (S); top right and middle right Geneva Marjoram (S); middle left Linara Copenhagen Blue (A); bottom right - Geneva Azalea (S); below Linara Malchite (A).



Kartosuro

Price level based on fabric choice: S - Standard fabric A - Supplement A fabric B - Supplement B fabric



Chair

H: 104cm
W: 86cm
D: 80cm
£650 (S)
£750 (A)
£850 (B)



Sofa

H: 104cm
W: 145cm
D: 80cm
£1,050 (S)
£1,250 (A)
£1,450 (B)



Footstool

H: 48cm
W: 40cm
D: 40cm
£200 (S)
£240 (A)
£270 (B)



Table

H: 60cm
W: 40cm
D: 40cm
£200



Coffee table - wood top

H: 51cm
W: 70cm
D: 48cm
£275



Coffee table - glass top

H: 51cm
W: 74cm
D: 52cm
£360



Set prices

The sets shown below have between 5 and 10% discount built-in.
If you want a different combination (of more than 3 pieces) just let us know
and we'll create a set price for you.



4 piece set 2 chairs, 1 footstool, 1 side table.

£ 1,585 (S)
£ 1,800 (A)
£ 2,000 (B)



6 piece set Sofa, 2 chairs, coffee table, side table, footstool.

£ 2,725 (S)
£ 3,100 (A)
£ 3,475 (B)

Product footprints

Figure out what will work in
your space, download our
cut-out footprints and scaled
paper floor plans. www.fairtradefurniture.co.uk



Fairtrade Furniture - design by Tord Kjellstrom, industrial designer (S.I.D.)



Compact and comfortable...perfect for smaller spaces.

This is our range of smaller feel-good chairs, designed with the space-conscious in mind. The chair has a retro feel to it, with an attractive curved back and sleek straight sides, and quirky 'horns' and 'legwarmers' adding a touch of personality to the chair!

Ideal for conservatories and garden rooms, but also very good as occasional chairs in living rooms, or in any cosy corner. Also light enough to be taken outside in good weather to enjoy the garden.



Low or high-backed options:

Both the chairs and the sofas come in two versions: either a low back, for comfortable seating which allows you to maximize your views, or our high-backed version (about 15cm taller) which gives more support for back and shoulders.

Materials used...

The main material for this range is natural banana fibre. The beautiful wickerwork is woven onto a structure of rattan poles. The wooden components are made using FSC-certified acacia and teak. The result is a neat chair which exudes quality, and shows off the sheer craftsmanship of our weavers. Luxurious feather-filled cushions (from Somerset) complete the feel-good effect.

Choice of fabrics

We offer a wide choice of fabrics, plains, semi-plains and patterns, with hundreds of colourways. There are three price levels; Standard (S), Supplement A, and Supplement B. For full details see our 'Fabric Options' pages. Shown here: top left, bottom right, and below right - Acacia Oyster (A); top right, middle right, bottom left - Linara Coffee Bean (A).



Bantul

Price level based on fabric choice: S - Standard fabric A - Supplement A fabric B - Supplement B fabric



Chair
H: 82cm
W: 63cm
D: 77cm
£550 (S)
£625 (A)
£700 (B)



Two-seater sofa
H: 82cm
W: 124cm
D: 77cm
£975 (S)
£1,125 (A)
£1,275 (B)



Highback chair
H: 96cm
W: 72cm
D: 77cm
£600 (S)
£675 (A)
£750 (B)



Highback sofa
H: 96cm
W: 132cm
D: 77cm
£1,075 (S)
£1,225 (A)
£1,375 (B)



Table
H: 52cm
W: 36cm
D: 36cm
£175



Coffee table
H: 51cm
W: 71cm
D: 51cm
£285

Footstool options also available in dark banana from the Kartosuro range.

Product footprints

Figure out what will work in your space, download our cut-out footprints and scaled paper floor plans. www.fairtradefurniture.co.uk



The sets shown below have between 5 and 10% discount built-in. If you want a different combination (of more than 3 pieces) just let us know and we'll create a set price for you.

Two chair set
2 chairs, plus side table.
£1,195 (S)
£1,335 (A)
£1,475 (B)



Two chair set HB
2 highback chairs, plus side table.
£1,285 (S)
£1,425 (A)
£1,565 (B)



5 piece Sofa set (sofa, HB chair, normal chair, coffee and side table)
£2,325 (S)
£2,595 (A)
£2,865 (B)



Fairtrade Furniture - design by Tord Kjellstrom, industrial designer (S.I.D.)



Lighting

Our **tsantai™** collection now includes 4 classic lighting products. These have been designed to complement our chairs, tables and footstools, and will add a touch of atmosphere and style to the room of your choice.

The design features a tall pyramid shape, woven on a frame of rattan poles, and using fine banana fibre for the weaving. Choose from a floor lamp or two sizes of table lamp. The lamps are available in pale or dark banana fibre.

There is a choice of two lamp shades, one made from recycled card, the other from a cream fabric with leaves captured underneath.

Dimensions and prices:

A. Floor lamp with shade H: 163cm W: 40cm £250

B. Large table lamp with shade H: 77cm W: 30cm £175

C. Small table lamp with shade H: 59cm W: 22cm £135

D. Semarang Pyramid light H: 159cm W: 35cm £425



Planters

We have created three woven planters which are designed to complement our chairs, tables and footstools; or they can of course work on their own as a way of enhancing your plants and floral displays. Metal liners are provided inside each planter.

E. Seagrass tall planter.

Ideal for palms and other dramatic plants where more height is desired; this design is made in seagrass, and features two wooden shelves. H: 100cm x W: 41cm (at base) £175

F. Triple planter. Providing display opportunities at three different heights. This design is made in dark banana fibre. H: 75cm x W: 50cm. £200

G. Rattan single planter. With a handy wooden shelf, made in rattan. Very good for medium-sized pots and plant displays at waist height. H: 60cm x W: 43cm. £150

H. In addition, in the Semarang range there is a cabinet which features shelving and a planter section at the top (shown below, liner not supplied). H: 150 W: 77 D: 40 £495



Fairtrade Furniture - design by Tord Kjellstrom, industrial designer (S.I.D.)

Standard price fabric options

Go online for more information on our full range of fabric colour and design options

A wealth of possibilities waiting for you to explore...

We have developed a selection of fabrics which we think suits the character of our ranges, and provides you with the opportunity to tailor the furniture to your preferred style and colour-scheme.

The collections are divided into 3 price bands:

Standard price fabrics: Geneva and our handwoven collection (on this page)

Supplement A fabrics: (on next page)

Plains: Romo Linara, Linwood Delta, Linwood Omega Velvet

Washable patterns: Romo Cubis and Lorcan collections

Supplement B fabrics: (on page 17)

Linwood textured weaves and printed velvets

Vanessa Arbuthnott linen prints

Between those 4 collections we estimate there are well over 1000 possibilities for you to choose from!



Standard price fabrics

Geneva collection

Villa Nova's Geneva range has over 150 beautiful colours available. The fabric is a hard-wearing cotton-linen which is machine washable at 40 degrees. It is our work-horse fabric... reliable, long-lasting and hard-wearing, with a great selection of colours. Shown here are our pick of 8 winners which have been tried and tested on our furniture.



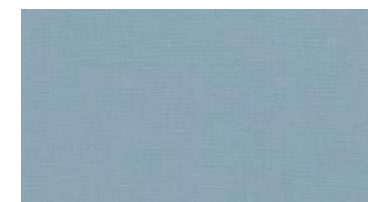
Geneva Wasabi



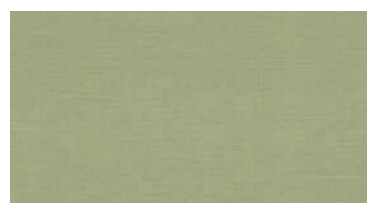
Geneva Shingle



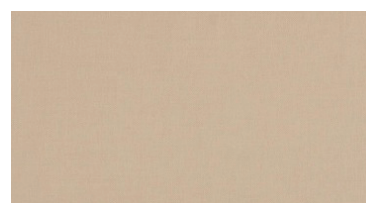
Geneva Pumpkin



Geneva Nordic



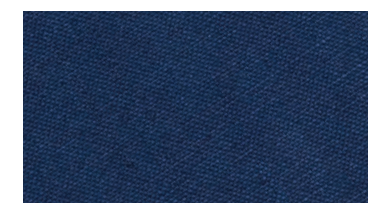
Geneva Laurel



Geneva Alabaster



Geneva Crimson



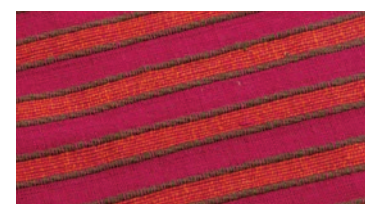
Geneva Neptune



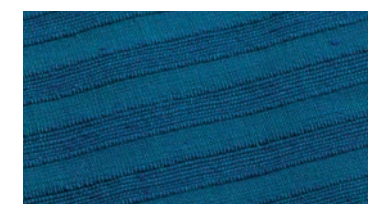
Taaru Lemongrass



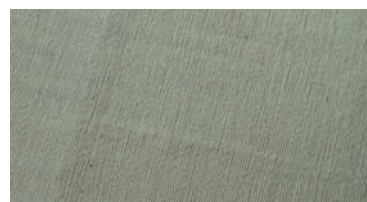
Naina Coffee



Taaru Festival



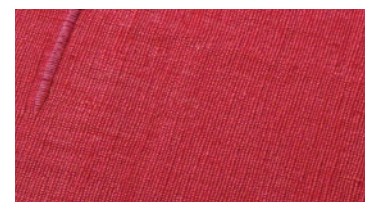
Taaru Andaman



Naina Olive



Naina Coconut



Naina Coral



Naina Aqua

Handwoven collection

For people who like a little more character to their fabric, we offer two handwoven and fairly-traded fabrics (100% cotton) sourced for us from India by Chandni Chowk. The Taaru fabric is a subtle stripe pattern, while Naina is a semi-plain with an over-sewn decorative line effect.

Supplementary price band A fabric options

Go online for more information on our full range of fabric colour and design options

There are three plain collections to choose from:

Romo Linara – a beautiful soft-touch cotton/linen blend in 360 colours

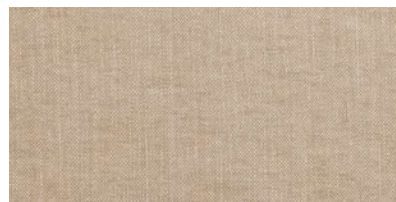
Linwood Delta – a washable plain cotton print with a little extra character; 43 colours available

Linwood Omega – an amazing collection of washable velvets in an attractive set of 100 colours

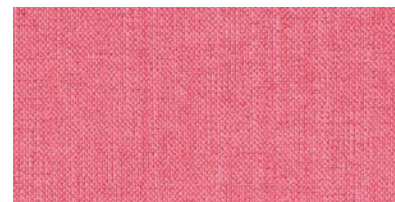
Plus two stunning print collections from **Romo Fabrics**:

Cubis – from which we have selected two patterns that work particularly well, and

Lorcan – from which we have selected three patterns



Linara Teak



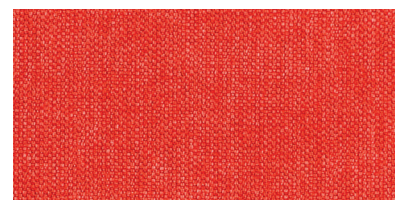
Linara Watermelon



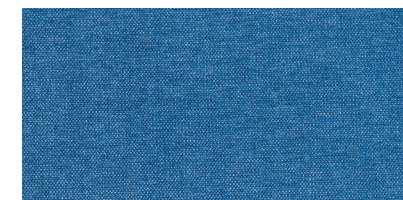
Linara Myrtle



Linwood Delta Salt



Linwood Delta Tangerine



Linwood Delta Ocean



Linwood Omega Velvet Grass



Linwood Omega Velvet Mustard



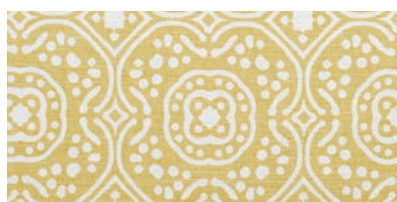
Linwood Omega Velvet Vermilion



Linwood Omega Velvet Lagoon



Linara Basil



Romo Cubis Chella Quince



Romo Cubis Acacia Oyster



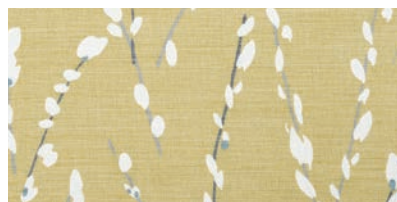
Romo Lorcan Mikado Red Coral



Romo Cubis Acacia Tourmaline



Linwood Delta Lime



Romo Lorcan Mikado Dandelion



Romo Lorcan Kaiko Magnesium



Romo Lorcan Kaiko Pumpkin



Romo Lorcan Sefina Duck Egg

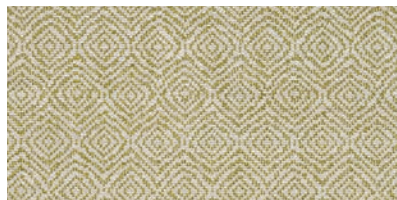
Supplementary price band B fabric options

From our new textile partner Linwood Fabrics we have some beautiful options for you to consider; 3 textured weaves in different designs and weights:

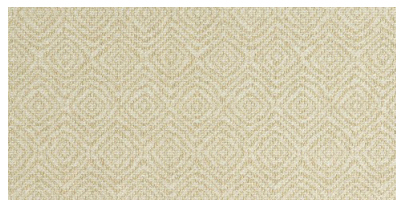
- **Lars Geometric**, which is a very hard-wearing cloth in 23 colours.
- **Tyger**, an elegant jacquard weave in 8 subtle colours.
- **Kitsune**, a large herringbone woven pattern in 6 colours.

A selection of **Omega velvet** prints – rich and lively designs with the added bonus of being washable and practically bullet-proof.

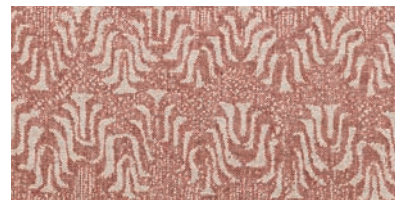
We also continue to bring you a selection of gorgeous **Vanessa Arbuthnott** linens, featuring 7 designs which we know look stunning on our furniture.



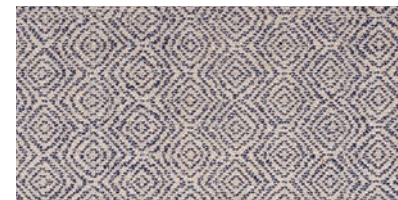
Linwood Lars Apple



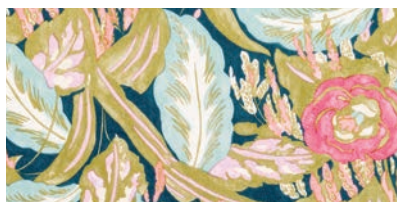
Linwood Lars Almond



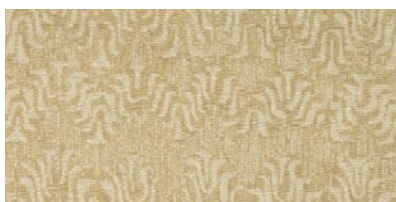
Linwood Tyger Blush



Linwood Lars Admiral



Linwood Velvet Les Fauves Olive



Linwood Tyger Natural



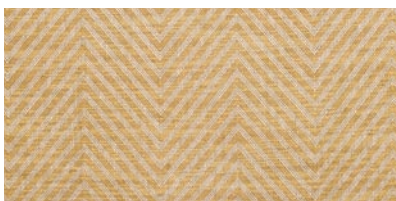
Linwood Kitsune Terracotta



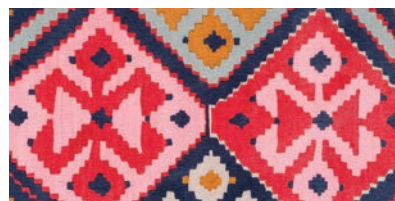
Linwood Tyger Ocean



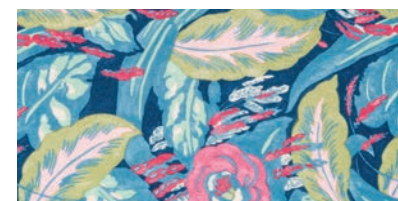
Linwood Velvet Casper Seagreen



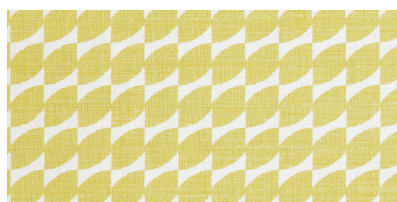
Linwood Kitsune Ochre



Linwood Velvet Otto Henna



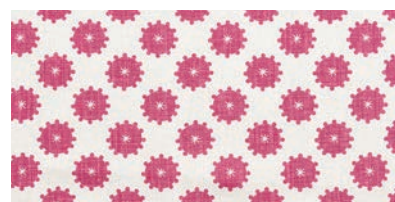
Linwood Velvet Les Fauves Cerulean



Vanessa Arbuthnott Sepals & Petals Kale



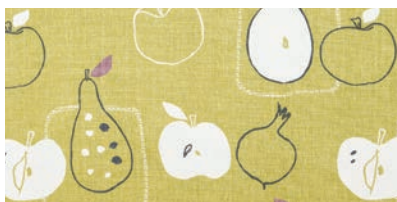
Vanessa Arbuthnott By the Sea Lemon



Vanessa Arbuthnott May Damson



Vanessa Arbuthnott By the Sea Blue



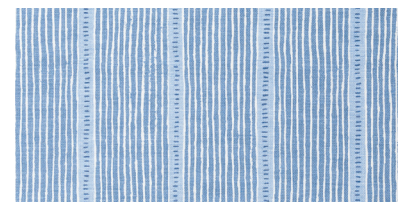
Vanessa Arbuthnott Apples & Pears Kale



Vanessa Arbuthnott Stripe Clay/Lemon



Vanessa Arbuthnott
Garden Damson/Light Kale/Winter



Vanessa Arbuthnott
Cornflower/ForgetmeNot

The people behind the products

Inori

Inori (Indonesia Origin) are based in Jogjakarta. They are a Fair Trade agency established in June 2004 with the aim of facilitating micro and small producers to access markets through their trading activities. They manage and co-ordinate the producer groups involved in the production of the Jogya, Kartosuro and Bantul ranges.

Foremost amongst these is the Kisno workshop in Trangsan (Kartosuro region), where this small family business continues the long-standing weaving tradition of the area. Mr and Mrs Kisno employ about 6 full-time weavers.

The second main group with whom INORI work is a carpentry-based factory called KVAS. This business has an excellent record for its environmental initiatives and performance, and was one of the first companies in Indonesia to achieve FSC-certification. Their carpentry team are now involved in producing our new low Jepara range, the second stream of production for the Semarang range, and seatframes/shelves/table-tops for all other ranges.

The lampshades and electrical components in our lighting range are made by a small company called Borneo Lighting, who specialize in handmade lampshades using recycled materials and other craft-based materials.

Pondok Kayu Tropis

PKT are based in a small town called Kendal, 30km West of the port of Semarang, on the North coast of Java. It is a medium-sized business owned and run by Tri Dalke with the support of her partner Tommy Fredriksson. They employ over 50 people, of whom 12 are dedicated to working on our furniture. They are our main supplier for the flagship Semarang range

Working conditions are excellent in their small but modern factory, which specialises in production of wooden structures for modular homes. Skilled rattan weavers from the furniture-making centre of Jepara have now joined the Mokko team in Kendal so that the products can be made in one location, under one roof.

Benefits for PKT staff include:

- Wages paid are well above local and national averages
- Salary bonus once a year at time of Idul Fitri (usually about 1 weeks wages)
- Help with loans if and when needed
- Access to company transport and hospital care if needed.

Chandni Chowk Fabrics

We now work closely with the Fair Trade retailer Chandni Chowk based in Devon. They provide us with handwoven fairly traded fabrics which come from a remote area in Northern India called Naugaun. Here a group of farmers have invested in home-based handlooms to provide themselves with additional work and income when they are not working the land. They provide the beautiful handwoven and hand-dyed fabric which is now one of our two main fabric options. They have been trading with Chandni Chowk for over 20 years.

Fine Quality Feather Company

Our high quality cushions are produced in Frome (Somerset) by the Fine Quality Feather Company which is family-owned and employs over 15 women.



Our Fair Trade Story



Our guiding principles

The Fair Trade Furniture Company was set up in 2007 by Hugh and Rachel Ross. It is a family concern with simple aspirations:

- Create special products which people will cherish
- Make Fair Trade a way of life
- Minimise our environmental footprint
- Be honest and open in all our communications.



What we mean by Fair Trade

We are members of the World Fair Trade Organisation and follow their 10 guiding principles:

1. Use trade to reduce poverty, creating opportunities for economically disadvantaged producers
2. Operate with transparency and accountability
3. Trading practices which emphasise the well-being of producers
4. Payment of a fair price, set by the producer
5. No child or forced labour
6. Encourage equal opportunity, non-discrimination and freedom of association
7. Ensure safe and healthy working conditions
8. Focus on building the capacity of suppliers
9. Active promotion of Fair Trade
10. Commitment to the environment, and sustainable practices.

We have been independently audited in April/ May 2016 - both in the UK and in Indonesia - to check that our practices comply with the WFTO guidelines. For more details of what this means for our partners see our website.

Environmental impact

We have deliberately chosen weaving materials which are all fast growing, renewable natural resources, which grow abundantly in Indonesia: rattan, seagrass and banana fibre.

Of these, the material we use most is seagrass; this comes from Kulonprago district near the famous temple of Borobodur. The seagrass is produced by hundreds of local farmers as an extra source of income.

The main wood we use is called 'mindir'. This is an Indonesian hardwood, which grows fast (to a tree diameter of about 50cm in 10-12 years) and is found locally on Java about 3-4 hours drive from Kendal.

Our partner PKT who are our primary supplier of the Semarang range has now achieved SVLK certification, which means the mindir wood is fully tracked from source through to the final product, and is regularly audited. We are now working with PKT to move the mindir growers and timber suppliers towards FSC certification.

Our partner INORI produce all our other ranges: they now use FSC-certified teak, acacia and mahogany.

In February 2016 we and INORI agreed to participate in a pilot project sourcing certified sustainable rattan from community projects in Indonesia. The initial focus is on rattan poles, but the plan is to source all our rattan from this project if possible.

Other measures which we are taking to reduce our carbon footprint include container sharing between our suppliers, using Ecotricity as our energy supplier in the UK, and using bikes to get to work!

Delivery information

Leadtimes

Our normal lead-time is 5-6 weeks from an order being placed to delivery to your home. This allows us to order the fabric, and make up the cushions of your choice. However if we are waiting for stock from Indonesia, the lead-time can be longer.

Delivery

Our prices include delivery (by single person) to all mainland addresses in England and Wales; supplements apply for Scotland, Northern Ireland and all islands. Please email or call for a quote.

Deliveries outside the UK

We also deliver to Ireland, continental Europe and further afield. Recent shipments have been made to Switzerland, Holland, Germany, France, Spain, the USA and New Zealand!





**The Fair Trade
Furniture Company**

Find out more at www.fairtradefurniture.co.uk

Or contact us

T: 01722 340882

M: 07801 380793

E: hello@fairtradefurniture.co.uk

Visit our showroom (but please call
to check someone will be there):

The Fair Trade Furniture Co Ltd
25-26 Norton Enterprise Park, Whittle Rd,
Salisbury, Wiltshire SP2 7YS

Prices valid until 31st March 2020